
Electronic picture frame screen specification book

Product model number: GKHD-G3201



- ◆ Imported white wood, solid wood, high-density, non-cracking, not easy to change
- ◆ The fuselage adopts metal spray hardware cold rolling plate process
- ◆ Eye protection paper screen, good color reduction degree, uniform brightness
- ◆ Support for lossless gamma display, rendering the canvas level realistic display effect
- ◆ Support for a custom timing switch machine
- ◆ Support horizontal and vertical wall hanging installation
- ◆ Support remote control content, switch machine, etc
- ◆ Applicable to: wedding dress shop, art museum, art exhibition, painting, calligraphy and painting, family photo, etc
- ◆ Support 7 * 24 hours uninterrupted work, adapt to a variety of long

GAOKEview®

time boot working environment

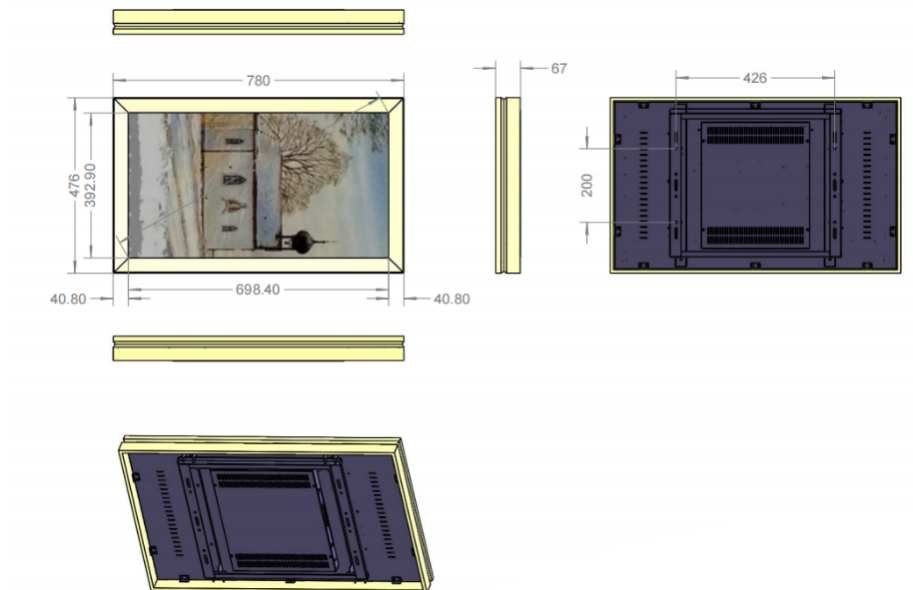
LCD size	32 Inch
LCD brand	New original package LED commercial LCD panel
resolution ratio	1920*1080
Display area	698.4*392.9mm (H×V)
Show the proportion	16: 9
Visual Angle	89 / 89 / 89 / 89 (left / right / up / bottom)
luminance	300cd/m2
Backlit type	ELED
Color degree	16.7M (8-bit)
service frequency	60HZ
Pixel arrangement	RGB vertical bar mounting
operating system	The Android Android 9.0
CPU	CPU 4 Nuclear A53
internal storage	1GB (optional up to 2G)
memory	8GB (optional up to 32G)
suona	8 European 5 watts
system interface	USB * 2, RJ 45 * 1, headphone holder * 1, DC-IN * 1
Video play	Various formats support wmv, avi, flv, rm, rmvb, mpeg, ts, and mp4
Picture play	Support BMP, JPEG, PNG, GIF and other formats
internetwork communication	Support for Ethernet, WIFI optional 3G / 4G
Timed switch machine	Support the custom setting of the switch time
Mouse keyboard	Support hot pull plug
Third party applications	Support for third-party applications
Bezel material	solid wood

GAOKEview®

Body material	Hardware cold rolled steel plate
Body size	780 * 476 * 67mm (including the hanger)
Hang hole size	400*400mm
packing measurement	870*145*580mm
Body weight	11kg
Including heavy packaging	13.5kg
Wall hanging bracket	Standard horizontal and vertical general hanger
way to install	Wall wall mount optional optional wall mounting
usage scenario	indoor
input voltage	AC100-240V
Standby power	<1W
power rating	<50W
service environment	Temperature-10℃ ~55℃ / humidity 10% RH ~ 90% RH
Storage environment	Temperature-15℃ ~65℃ / humidity 10% RH ~ 95% RH
Random accessories	Power cable, 1 WiFi antenna, 1 remote control, one manual, one certificate warranty card
replacement tool	Electric drill / screwdriver / marker / horizontal ruler / wrench / tape measure / expansion screw

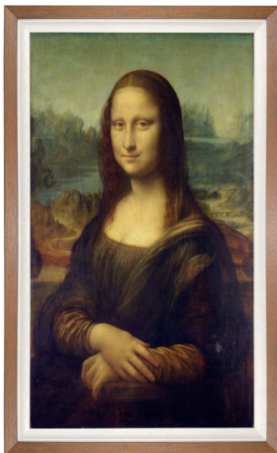
GAOKEview[®]

Product
view:



GAOKEview[®]

Product color: (other colors)



Log color, a brown color